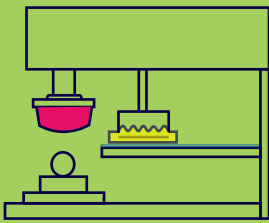
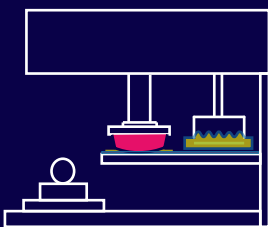
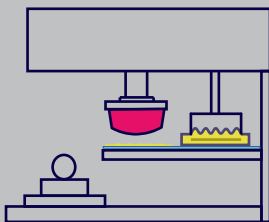


PAD PRINTING: THE INKCUPS WAY



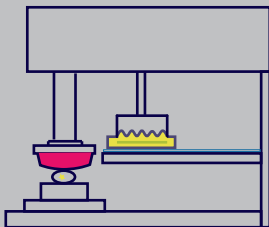
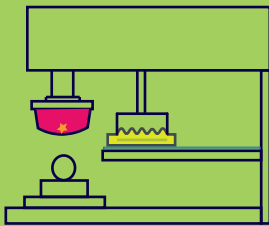
1
The cup & pad are in the forward position. The cup floods the etch with ink.

2
The cup slides back doctoring the plate leaving the perfect amount of ink in the etch.



3
The pad presses onto the etch & picks up the image.

4
The cup slides forward to flood the etch & the pad takes position over the part.



5
The pad drops down & presses the image onto the part.

6
The pad lifts & the cup slides back to start the process again!

