

1. Uncrate the unit and place it on a stable work surface.

Do not plug the USB in yet.

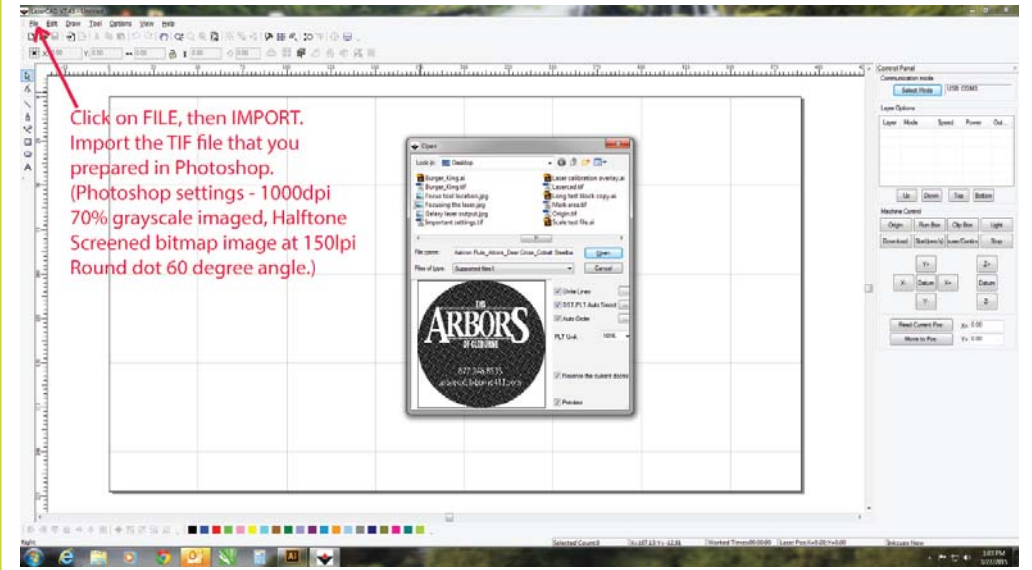
Install the software from the CD provided.

Start with Lasercad
Then install the 64bit USB driver
Install Teamviwer 8 (we'll need that for remote training and support.) Use only version 8.

Plug in the USB connections

***Only use the USB cord provided.**
Longer USB cables may have trouble communication problems.

5. Import your graphic file



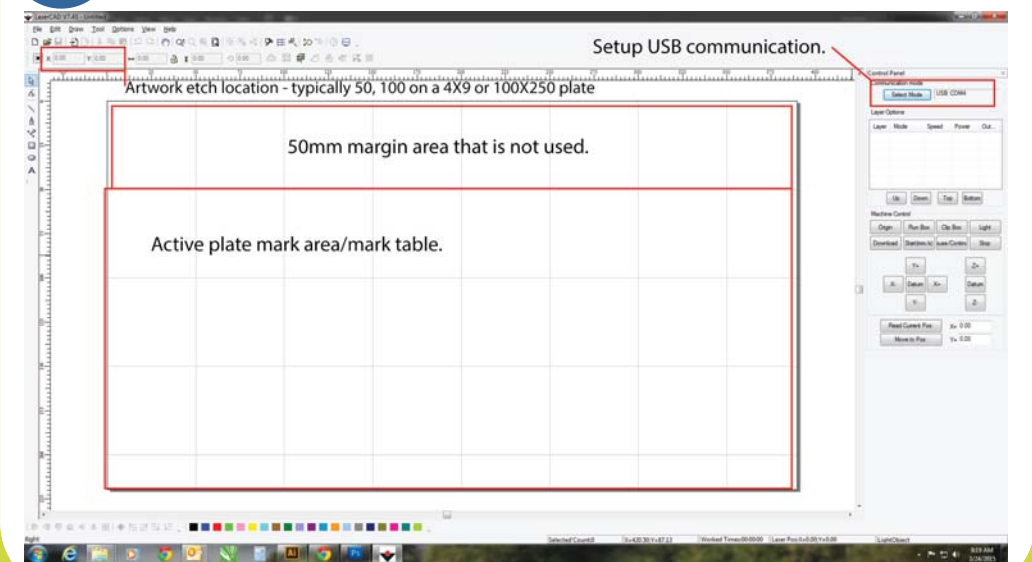
2. RX-4 Exhaust Unit (optional)

If you have purchased the RX-4 exhaust unit, then plug the remote on plug into the back of the laser system.

You must provide powered ventilation to the laser of at least 110cfm. Either vent to the outside or provide HEPA filtration if venting inside.

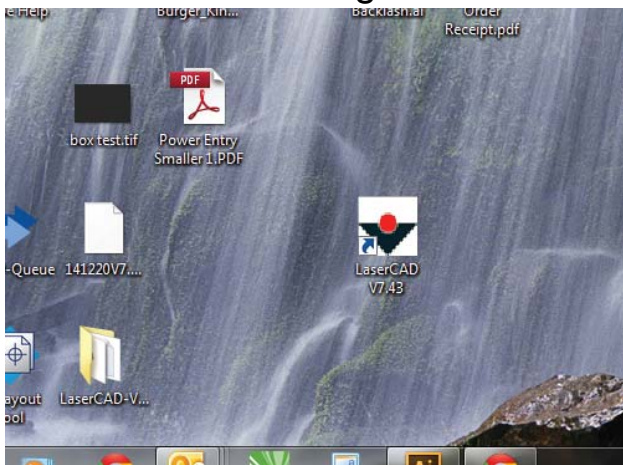
*** Failure to properly vent the laser will void the warranty for any damage resulting**

6. LaserCad work area.

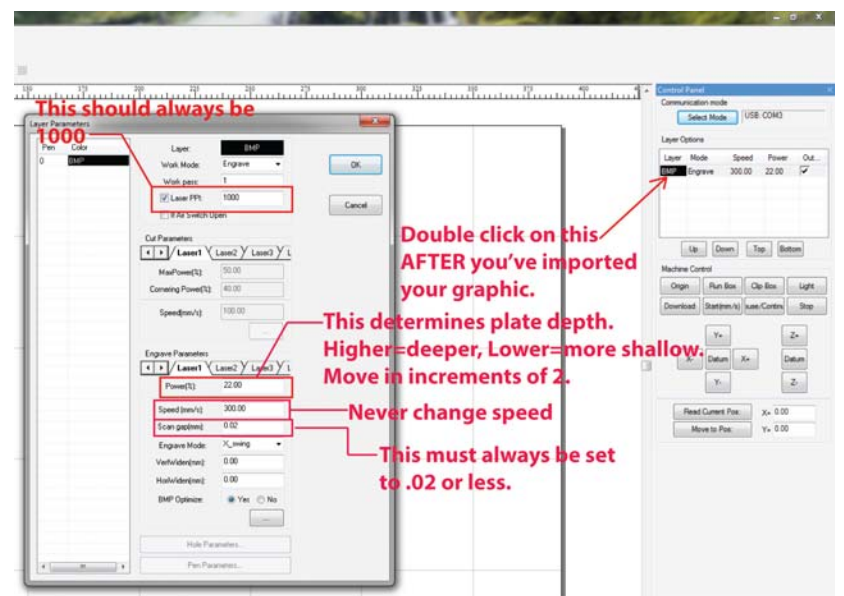


3. Double click on the software icon located on the desktop. If you are now logged in as someone else, you can find the program here:

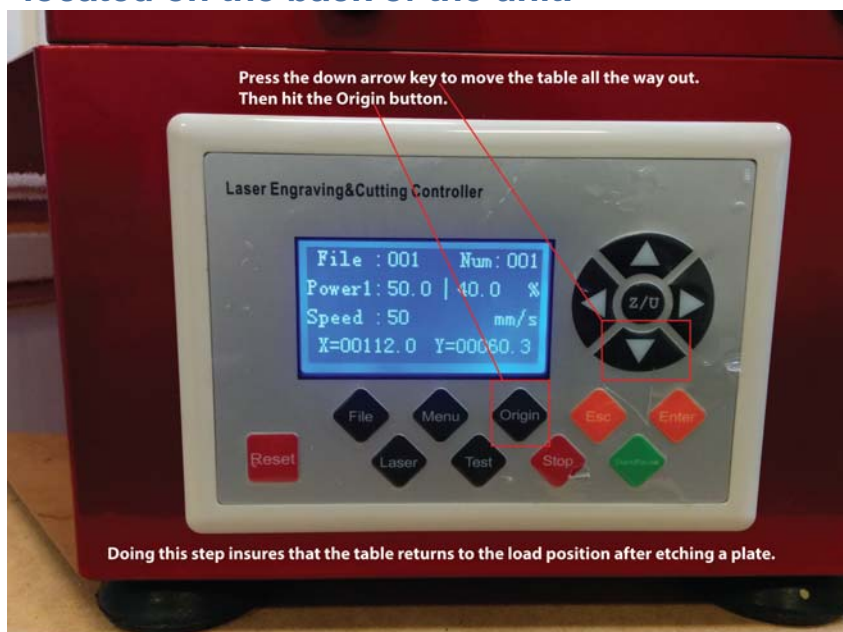
C:\LaserCAD\AWCPrograms\LaserCAD.exe



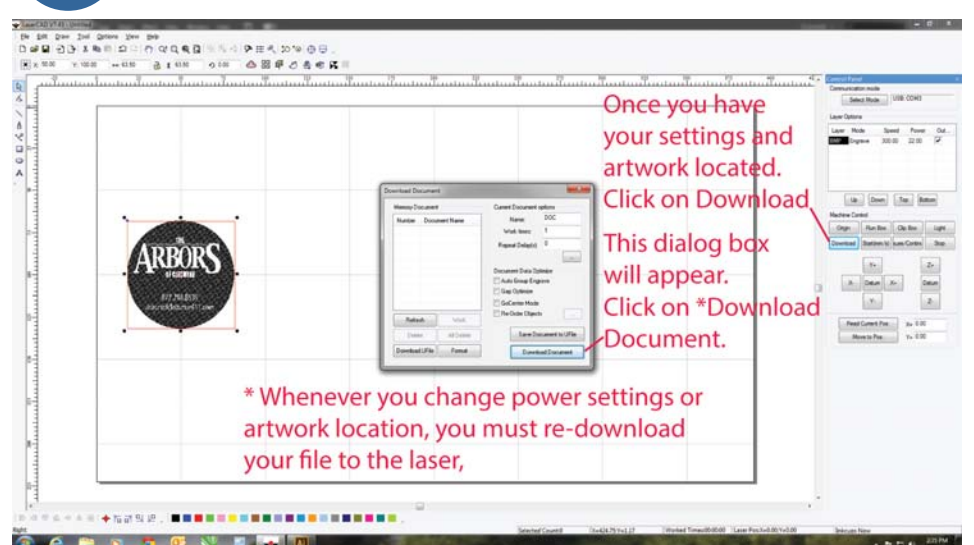
7. Settings for plate depth.



4. Turn the laser on using the power switch located on the back of the unit.



8. Sending the file to the laser.





Please Call Inkcups Now
for help and remote training.
978.646.8980

inkcups.com

When etching a long image such as a string of type. You should always etch long images from left to right. When placed vertically, it may take up to five times longer to etch. It's ok to place the plate vertically into the laser.

How to etch plates faster:
The laser will always go faster etching one image at a time. When two plates are etched at a time, the dead scan space between the plates will increase the overall time needed by roughly 20%.



Cobalt 3000 Quick Start Guide

Instructions about setting
up your laser for
first time use.

inkcups.com