

AccuRIP Software



INKCUPS NOW

www.inkcups.com



AccuRIP™

- RIP software for printing films (positives and negatives) of your graphic art files quickly, easily and accurately from an Epson® Inkjet. A Macintosh and Windows networkable solution!

(Mac • Windows) (Desktop: \$495. USD / Wide Format: \$795. USD)

All Black Cartridge Ink System

TM aBc™

- A time and money saving option for AccuRIP software users, this dye-based (cartridge) ink system dedicates your inkjet to making films. ALL of your slots will contain screen-print formulated BLACK dye. From within AccuRIP simply turn on the feature with a single-click and pop in the All Black Cartridges.

Prices vary based on Epson model.



[SPOT PROCESS] Separation Studio™

On-Screen and On-Press: Accurate to a Tee!

- The industries easiest and most accurate automated, tonal-image, color separation software. Separate your Photoshop, Photo Paint, digital photos, highly colored illustration files and much more into individual films (solids and halftones) ready to burn to screens and go to press. No other solution comes close to the incredible results of this separation engine.

(Mac • Windows) (New User Cost \$895. USD) (Mac • Windows) (Upgrade from SPVR \$345. USD)

> What is a RIP?

A RIP (Raster Image Processor) is a translator. Communicating between your graphics files and a non-Postscript® device such as an Epson Inkjet Printer the RIP allows the device to understand and print Postscript options.

As a DRIVER-based solution AccuRIP is available as an option in your PRINT Window's pop-down menu of every graphics application! Easy!

> How to Succeed with AccuRIP?

Postscript data varies - the most popular being fonts and halftones! Output will be trouble-free when files are properly built. AccuRIP does not alter data. Too many anchor points, a bad font downloaded from the internet, a low-res image, an outdated design program, or an embedded postscript error, for example, are a few of the things that can interfere with file output or provide unexpected results. Want to succeed? Be an efficient file builder!

> DOWNLOAD

**FREE fully-functional
Software Trials**



> Features & Benefits

Easy Installation with the AccuRIP Setup Wizard!

AccuRIP quickly builds a "driver" for your Epson® model. The driver appears as a "PRINTER" option in ALL of your graphics programs when you go to print. Simple!

An on-demand, driver-based RIP is a streamlined user experience – no need to launch a program or manage instruction sets for each file like other solutions require.

Print directly from the native design file. AccuRIP is always available to RIP data at super speeds.

AccuRIP can not alter data so it delivers what your file directs.

N-UP feature gangs separations on your film saving valuable output time as well as film media.

AccuRIP controls ink laydown to match your ink to your film brand. Includes a DROPLET WEIGHT TEST Print for selecting the best droplet weight for your film. 15 droplet weights per resolution - WOW!

AccuRIP is a network solution! Install to a host computer and share with ALL computers on your local network.

Download a FREE, fully-functional trial. >>>>
Make money during the 14-day trial period to offset or even cover the full cost of the program before the purchase.

Focus on the critical task of translating data accurately and quickly to the Epson Inkjet – no unwanted tasks or unneeded features to slow down and/or complicate your workflow.



Together AccuRIP Software, Epson Inkjets, film and ink are an affordable and reliable way to produce films making high priced Thermal and Photo Imaging devices no longer necessary long-term investments.

FAST SUPPORT...

FREE, friendly and professional tech support delivered by the industries best screen-printing minds. Access support through their exclusive online RAPID RESPONSE SYSTEM. Trust in Freehand Graphics. Their engineers are focused on delivering solid and reliable solutions. Their corporate office is dedicated to the support of its users. As your Reseller we are focused on sales and responding to your needs.



Supported Epson Models

50	3800
280	3880
285	4000
290	4450
515	4800
1100	4880
1110	4900
1390	
1400	
1410	
1800	
1900	
2400	

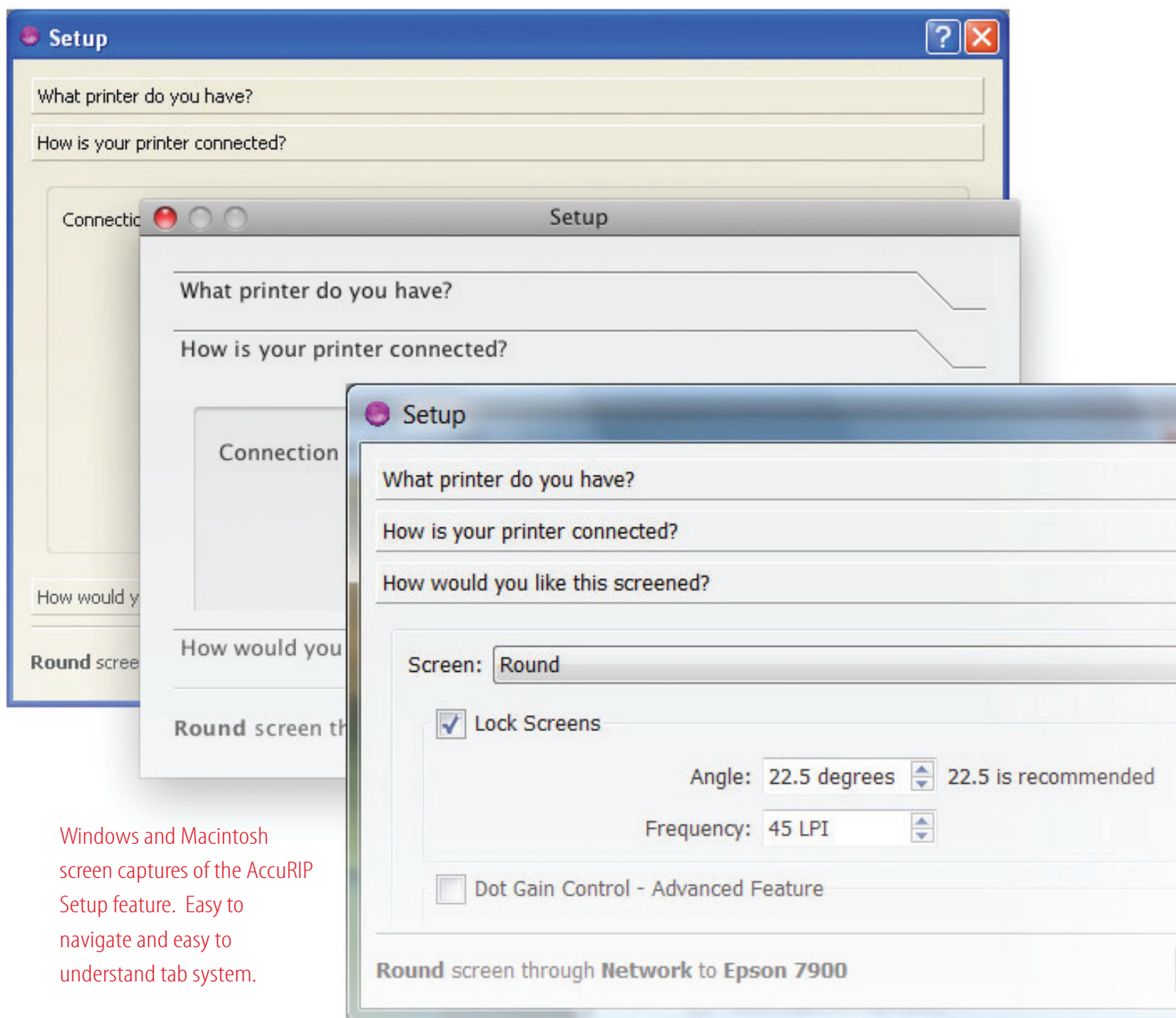
AccuRIP Desktop
\$495 USD

7000	AccuRIP Wide Format
7600	\$795 USD
7700	
7800	
7880	
7890	
7900	
9450	
9600	
9700	
9800	
9880	
9900	
10600	
11880	
PM G4500	

XP, Vista, Windows 7
Tiger, Leopard, Snow Leopard, Lion

Under the Hood Power and Control!

AccuRIP's Setup Menu is designed as a simple 3 Tab system - your simple to access and use under the hood controls. Whether you set it and forget it or make setting adjustments (i.e. line screen) you will find AccuRIP to be one of the easiest RIPs to use. Don't let the simplicity of the software user interface fool you - this is a super-fast, accurate and powerful RIP!



Windows and Macintosh screen captures of the AccuRIP Setup feature. Easy to navigate and easy to understand tab system.

All Black Ink

All Black Ink is engineered to dedicate your Epson to making film positives and use your Epson as it was intended - with all nozzles in use to reduce or even eliminate costly clogs.

➤ Inks, AccuRIP and All Black Ink

A favorite feature of AccuRIP is its amazing ability to turn a color inkjet printer into an efficient, dedicated film output device using ALL BLACK INK. When making films you only need BLACK ink, color carts are just a waste of money and of valuable printer real estate, plus idle nozzles can create unwanted clogs.

AccuRIP is developed to communicate to ALL slots. Load your inkjet with our ALL BLACK INK Cartridges filled with top-quality, sediment free, black dye with light blocking properties. Now all cartridges/slots will be used when printing. It's volume ink using the best delivery system - cartridges!

NOTE: Ink cartridges whether Epson, All Black, or others are keyed and chipped to specific slots of a specific model. Don't install any cart in the improper slot. It will not work and could damage the cartridge and inkjet device.

➤ Features & Benefits

Available for popular Epson Inkjets (desktop and wide format). It delivers volume of Black Ink in convenient cartridges.

Helps maintain the integrity of the printer by allowing it to operate as it was designed to - with all slots/nozzles in use.

As an option - AccuRIP users can begin using the All Black Ink System at any time.

The dye is specially formulated for screen-printers that need light blocking properties and is a sediment free formula.

Use popular and affordable screen-print film brands – waterproof being the best for density, stability and drying time.

A Chip Resetter is a valuable maintenance tool - ask your reseller to include it with your first purchase.

Get more mileage out of your inkjet with the exclusive All Black Ink Cartridge System for AccuRIP.

All Black Ink

> Pricing and Product Details: All Black Ink

1400 (Requires AccuRIP Desktop Software)

Cartridges per set: 6

Ink volume per cartridge: 18 ml

Ink volume per set: 108 mls

MSRP: \$152 per set

1800 (Requires AccuRIP Desktop Software)

Cartridges per set: 8

Ink volume per cartridge: 18 ml

Ink volume per set: 144 mls

MSRP: \$195 per set

1900 (Requires AccuRIP Desktop Software)

Cartridges per set: 8

Ink volume per cartridge: 18 ml

Ink volume per set: 144 mls

MSRP: \$195 per set

4800 (Requires AccuRIP Desktop Software)

Cartridges per set: 8

Ink volume per cartridge: 110 ml

Ink volume per set: 880 mls

MSRP: \$552 per set

4880 (Requires AccuRIP Desktop Software)

Cartridges per set: 8

Ink volume per cartridge: 110 ml

Ink volume per set: 880 mls

MSRP: \$532 per set

4900 (Coming Soon)

Cartridges per set: 11

Ink volume per cartridge: TBD

Ink volume per set: TBD

MSRP: TBD

Expected delivery: January 2011

7700 / 9700 (Requires AccuRIP EX Software)

Cartridges per set: 5

Ink volume per cartridge: 110 ml

Ink volume per set: 880 mls

MSRP: \$795 per set

7880 / 9880 (Requires AccuRIP EX Software)

Cartridges per set: 8

Ink volume per cartridge: 110 ml

Ink volume per set: 880 mls

MSRP: \$586 per set

7890 / 9890 (Requires AccuRIP EX Software)

Cartridges per set: 9

Ink volume per cartridge: 350 ml

Ink volume per set: 3,150 mls

MSRP: \$1,431 per set

7900 / 9900 (Requires AccuRIP EX Software)

Cartridges per set: 11

Ink volume per cartridge: 350 ml

Ink volume per set: 3,850 mls

MSRP: \$1,749 per set

* * * * *

Artisan 50*

Workforce 1100*

*Exclusive: contact Reseller for info

Ryonet: 800-314-6390

www.silkscreeningsupplies.com

* * * * *

Sold exclusively through Inkcups Now

www.inkcups.com

> On-Screen and On-Press: Accurate to a Tee!

The purpose of color separation software is to make the lengthy and often complicated process of tonal-image color separating fast, easy to do and most importantly ACCURATE.

Separation Studio does its task brilliantly thanks to the math and science of color, our expert engineering, and an untold amount of knowledge about screen-print art, pre-press and print production put to work for you.

This is REAL SOFTWARE and not an automation of simple routines or Photoshop tools and certainly not adjustments to cmyk. With Sep Studio you are working with the broader RGB light spectrum to decompile each image uniquely and accurately!

> DOWNLOAD

**FREE fully-functional
Software Trials**



> Features & Benefits

Quickly and easily color separate tonal images such as Photoshop files, digital images, stock photos, scanned images, Photo Paint files, overly colored illustration files, etc.

Be creative without the worry of separation limitations. If you can create it, Separation Studio can separate it!

Built-in, advanced editing tools allow targeted color adjustments, not available in the previous version Spot Process VueRite (SPVR).

Output the individual channels to films ready to burn to screens.

Sep Studio separations are easy to print. With a standard color set and a wet-on-wet, one flash (base) process every user can expect success on press.

Universal dongle works for both Mac and Windows users and provides the transportability that so many artists need.

➤ Since 1995 – Spot Process has been the color separation engine of choice for shops around the world.

The release of Separation Studio delivered even more features and controls – leaving other solutions in our dust!

- Separation Engine Power Boost: super-fast image handling and screen redraw
- Support for transparency
- Dockable windows and palettes
- Cascade/tile multiple windows
- Zoom tools
- View Channels in color “ink view” or black and white “film view”
- Manage multiple files simultaneously
- Create and edit ink libraries

➤ Press Friendly Solution

The process of decompiling a color image into its proper color channels is just as important as having films that are easy to print and hold up through the longest press runs.

Spot Process Separation Studio is the BEST color separation engine in the industry without question. What amazes users is how easy it is to print Sep Studio jobs – proving Sep Studio to be a great business solution!

➤ Advanced editing features

- Make “selections” for targeted Channel edits
- Saturation and de-saturation tools for ultra control
- Eraser tool for fast clean ups

Critical press support and print run stability

- Dynamic Underbase
- 3 Black Channel Options
- Auto Color Merging
- On-press position control: determines screen order before going to press
- Wet-on-wet screen-printing
- One flash (underbase only)
- Press stability for long press runs

Proof Positive

- Printing of high-res proofs
- Proof Positive™ saves edited files in a variety of formats

FREE USER SUPPORT

> Great Products - Great Support!

In addition to working with the team at Inkups Now, customers are entitled to valuable FREE support through Freehand's RAPID RESPONSE SYSTEM.

Request support from their web site. Your message is instantly filtered and categorized making it possible to deliver responses in well under an hour during business hours.

Engineered to improve the already appreciated and highly respected support response time - take a look at the Freehand testimonials page on their web site! A large investment in time and money developed the valuable Rapid Response System available to trial users and software owners. Outstanding customer support is absolutely as important as well engineered software and products!

Support outside of Freehand's normal business hours (Mon - Fri, 9 am - 6 pm EST), is through a comprehensive online knowledgebase and Video Café delivering 24 / 7 access to easy to understand information (the very same tech data used in-house for support).

Trust in the products thousands of users and corporations have since 1995.

> www.softwareforscreenprinters.com
Click **Get Help!** We're waiting to help you.



> Support Delivery...

Initial responses will typically be via email to gather the details the TEAM needs to help you quickly.

Never be put off by email replies. Here's why...written instructions often prevent downtime associated with verbal miscommunication. Instructions can always be looked back on at a later date.

Virtual Network Connections (VNC) allow Freehand to work on your system remotely while you watch. A tech will invite you to a VNC session when it will speed up or benefit the support process.